

Metolux®

# METOSET

## INJECTABLE RESIN CONCRETE REPAIR

LOW ODOUR STYRENE-FREE FORMULA

SANDABLE  
PAINTABLE



# Product Data Sheet

## Description

Metoset™ Injectable Concrete Repair is a 2 Part ready to use concrete repair resin which is used for repairing cracks and sealing joints in cementitious heavy applications. Housed in a cartridge, the formulation is delivered through a special mixing nozzle straight into the repair area. This requires no separate mixing board and reduces mess and waste.

**Tested to EN1504-3:2005 Products and systems for the protection and repair of concrete structures.**

This formula is for outdoor or indoor use, and is very versatile. May be applied to slightly damp surfaces without any preparations. Ensures a seamless repair.

## Key Benefits and applications

**Should be used with a high quality, geared silicone tool, such as the Chemfix 300ml tool.**

- Single unit packaging available in SAND or GREY colour
- easy to mix and easy to apply
- Styrene free for use indoors or outdoors (low odour)
- Excellent structural characteristics
- Stronger than cured concrete
- High surface abrasion resistance
- Cures down to -10°C (when the cartridge is kept at +20C prior to use).
- Re-usable unit
- Ready to use.
- Repairs to large cracks in concrete typically cementitious surfaces
- Masonry restoration,
- Jointing and bonding
- Chipped edges
- Paintable and coatable
- Bonds most construction materials.
- Sandable & Paintable

## Technical Data

### Gel Time

Around 8 minutes at 15°C, may be painted after 1 hour.

May be applied down to -10°C providing the cartridge temperature is +20°C

	N/mm <sup>2</sup>	Test Method
Compressive Strength	41.5	EN ISO 604 / ASTM 695
Flexural Strength	13.9	EN ISO 178 / ASTM 790
Flexural Modulus	2853	EN ISO 178 / ASTM 790
Tensile Strength	8.9	EN ISO 527 / ASTM 638
E Modulus	4844.5	EN ISO 527 / ASTM 638

The information and data given is based on our own experience, research and testing and is believed to be reliable and accurate. However, as Chemfix Products cannot know the varied uses to which its products may be applied, or the methods of application used, no warranty as to the fitness or suitability of its products is given or implied. It is the users responsibility to determine suitability of use. For further information please contact our Technical department.

Metolux®

# METOSSET

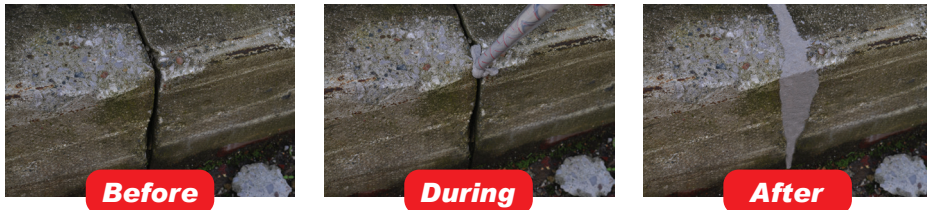
## INJECTABLE RESIN CONCRETE REPAIR

LOW ODOUR STYRENE-FREE FORMULA

### Repairs Types



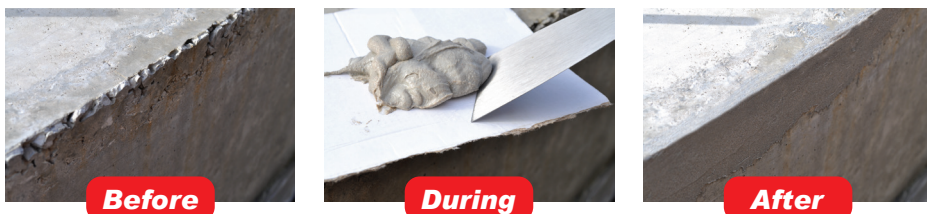
Unscrew the cap to commence extrusion. Apply the mixing nozzle. Either extrude the resin onto a board for application (see below) or point directly into the repair area.



The viscous nature of Metosset 10:1™ also allows it to be used as a deep crack and gap repair resin, using the nozzle to point deep into the repair area. The application areas must always be clean, dry (where possible) and free from dust and debris.



A standard crack stitch is the most common type of repair in concrete on walkways and ramps etc.



Edges and corners may be repaired with the aid of a scraper blade or putty knife. The product can be built up in stages if necessary.

Manufactured by Chemfix Products Ltd in the UK

Metolux®

# METOSSET

## INJECTABLE RESIN CONCRETE REPAIR

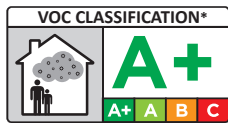
LOW ODOUR STYRENE-FREE FORMULA

### Product Usage



1. For use with crack repair and bonding. 2. Extrude the resin until an even mix is achieved. Point the nozzle directly into the repair area. 3. Fill the repair area with sufficient resin to allow for smoothing. 4. Smooth the resin to a perfect finish using a decorators scraper or similar.

### Approvals and Certifications



\*Information on the emission of volatile substances in indoor air, with a risk of inhalation toxicity, on a scale ranging from class A+ (very low emissions) to C (high emissions) level.



**Tested to EN1504-3:2005  
Products and systems for the  
protection and repair of  
concrete structures.**

### Sizes

Product	Size	Pcs / Box
Metoset Inject Repair Two mixer GREY	480g	12
Metoset Inject Repair Two mixer SAND	480g	12

### Handling and Storage

This product should be stored between +5°C & +25°C.  
Avoid Direct Sunlight.  
The Shelf life of the product is 18 months from the manufacture date.

### Ancillaries

Available on request



Spare Mixing Nozzle to suit



Chemfix extrusion tool.

Manufactured by Chemfix Products Ltd in the UK